
UT360/367/IT1366

MultiCard USimEditor

User's Manual

Rev. 1.0.4.0

Nov. 29, 2012



<http://www.ite.com.tw>

All rights strictly reserved. Any portion of this paper shall not be reproduced, copied, or translated to any other forms without permission from ITE Tech. Inc.

Contents

1. Introduction.....	2
1.1 System Requirements:	2
1.2 Multilingual Supporting:	2
1.3 Feature:	2
1.4 Note:	2
2. Drivers Installation.....	3
2.1 Installation Notice:	3
2.2 Installation Procedures:	3
3. USimEditor Operation Manual	4
3.1 Phone Book Operation Manual:	4
3.2 SMS Operation Manual:	8
4. Copyright Notice.....	12

1. Introduction

1.1 System Requirements:

- OS: Windows 2000 / XP / Vista °
- Hardware: USB 2.0 Host 、USB HUB (Optional) °

1.2 Multilingual Supporting:

- Simplified & Traditional Chinese, Russian, Germanic, Italian, Spanish, French, Japanese, Dutch and English °

1.3 Feature:

- With “USimEditor” , you can easily create, edit, and backup SIM card user’ s data, phonebook and message entries using your PC and stop typing in information using the mobile phone’ s keypad instead of typing in PC. Welcome to enjoy the delight operation by “USimEditor” !

1.4 Note:

- If PIN codes password window showing, it means user had set up PIN code password to protect SIM card.
Please enter correct PIN code password to read/write Phonebook.
- PIN (Personal Identification Number) is the password for unlock SIM card. PUK (Personal Unlocking Number) can unlock personal identification. SIM card will be locked to avoid misappropriation when user enters wrong PIN code by three times. At this time, user must enter PUK to unlock password. Attention! SIM card will lose efficacy forever if enter PUK continually by 10 times.
- GSM/CDMA had four kinds of coding (Simplified/Traditional Chinese, English and Digital) methods.
“USimEditor” can support all of it and select the best editor model automatically.
- Only 0 ~ 9, #, * and + is valid input character by GSM regulation.
- Please refer right hand side of Phonebook about entries of phone numbers and messages. The real entries quantity depends on the capacity of SIM card memory.

2. Drivers Installation

2.1 Installation Notice:

- “USimEditor” can edit data of SIM card in Windows environment. Must collocate with IC card reader in Windows environment.
- Most of the card reader only can read/ write original SIM card. Please switch your SIM card used in mobile phone to original SIM card for card reader reading/ writing.

2.2 Installation Procedures:

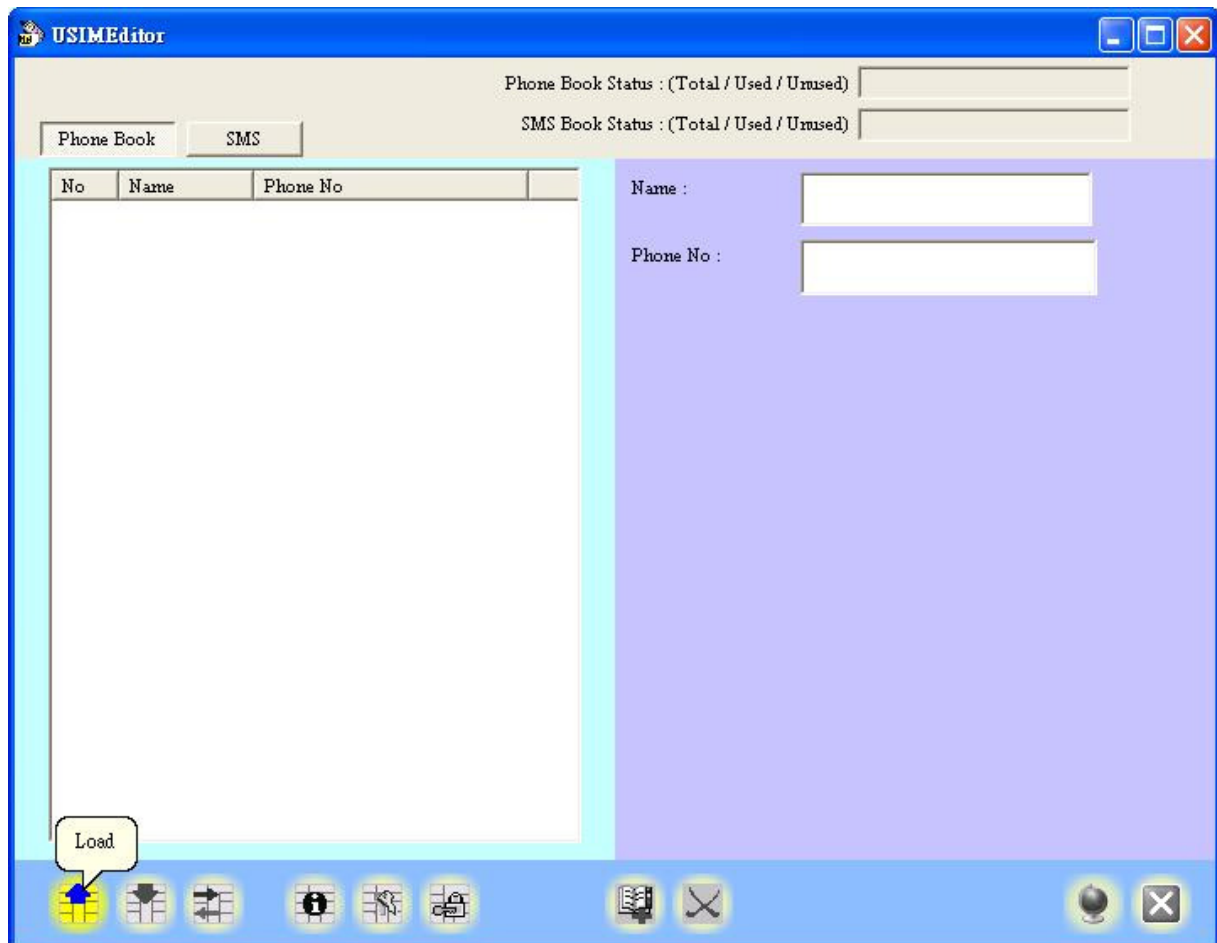
- Put CD Driver into CDROM (execute automatically by CDROM), please follow instruction on window to finish driver installation.

3. USimEditor Operation Manual

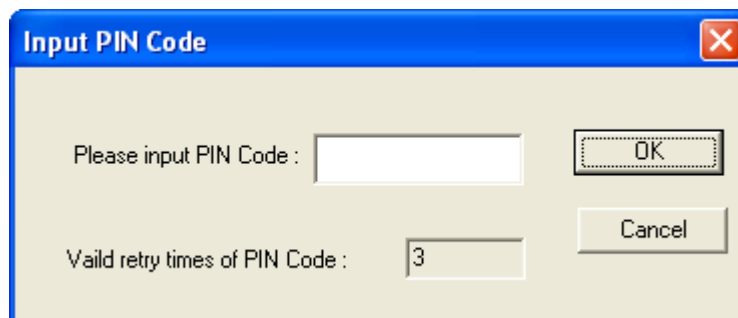
3.1 Phone Book Operation Manual:



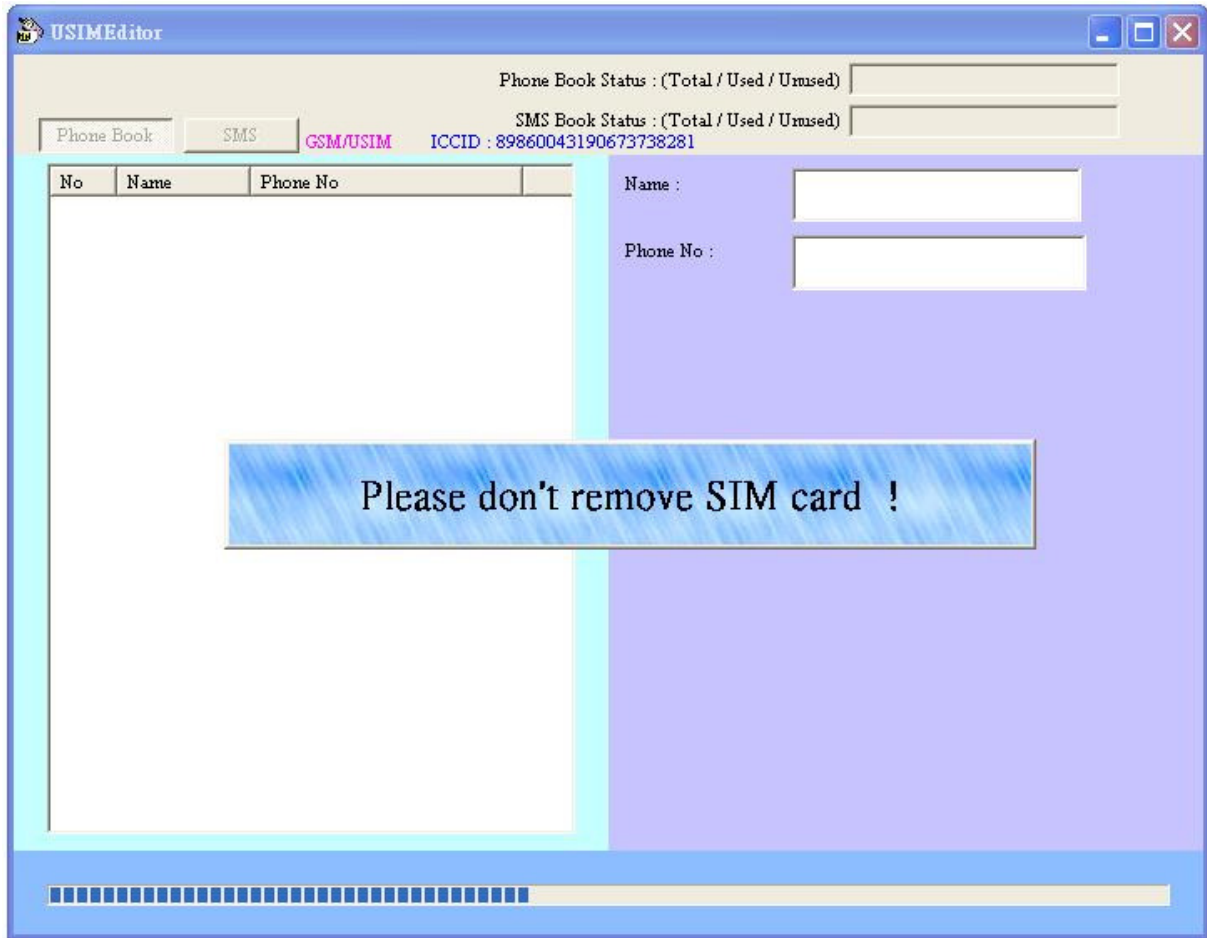
- Execute "USmartEditor" by pressing SIM Editor



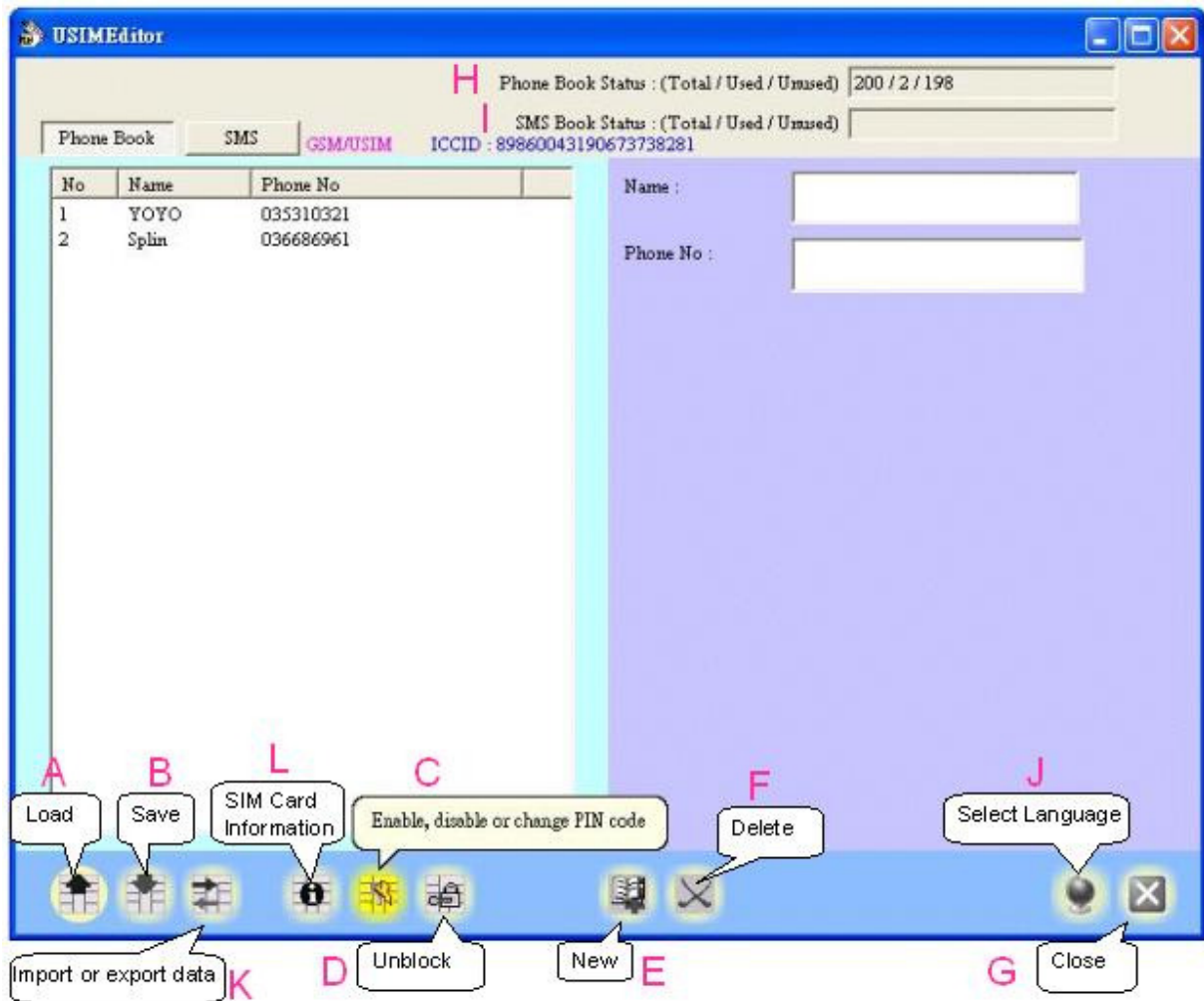
- "USimEditor" showing. Select Phonebook folder and then press Load icon



- User can read/ write phonebook data in SIM card after entering correct PIN code



- Please DO NOT remove SIM card when data backup



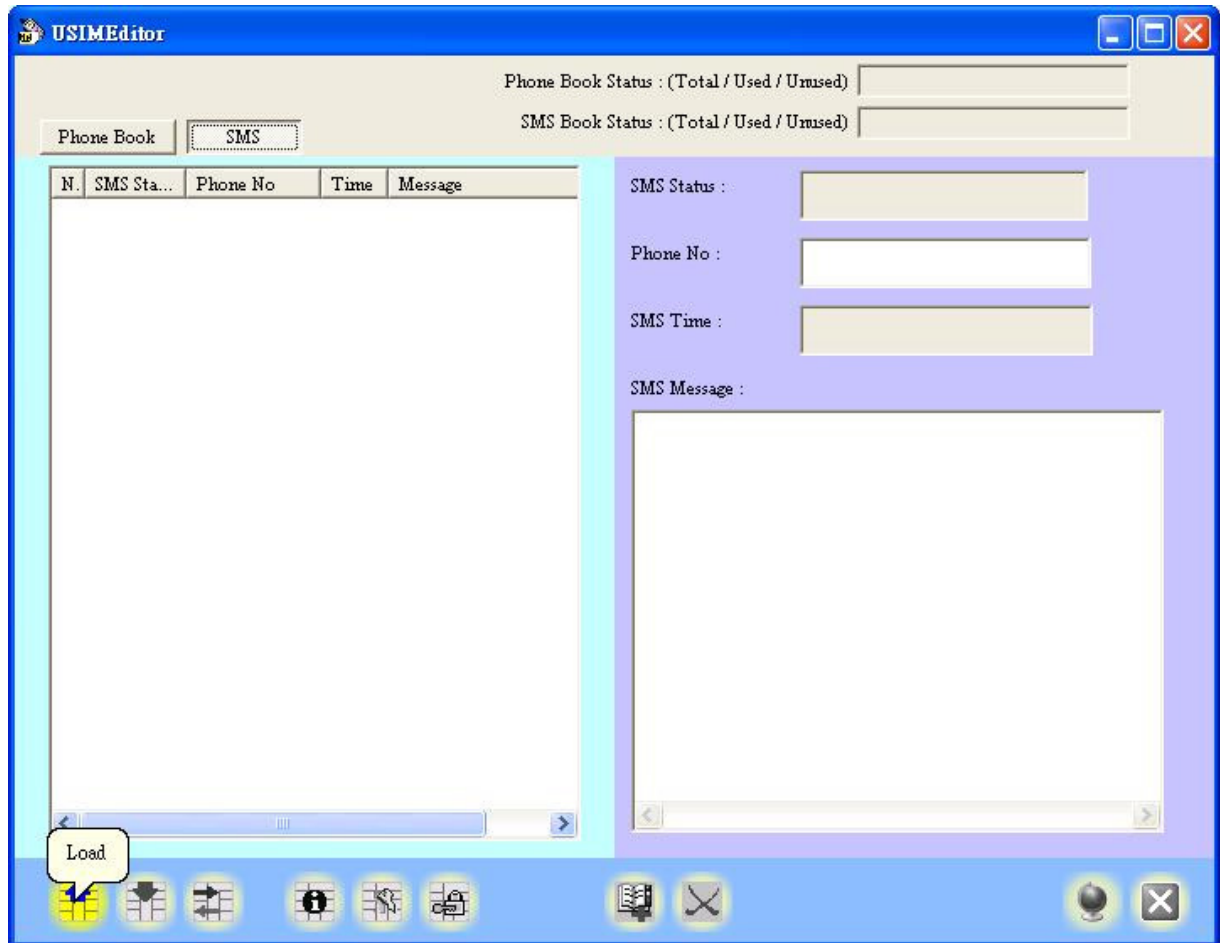
- A. Load: Backup phonebook data from SIM card to PC
- B. Save: After editing phonebook entries by “USimEditor” , click save to save edited phonebook entries back to SIM card
- C. Enable, Disable or Change PIN code: User can start using, unlock or change PIN code by this icon
- D. Unblock : SIM card will be locked to avoid misappropriation if user enters wrong PIN code by three times. Please enter PUK code to unlock. Attention! SIM card will lose efficacy forever if user enters PUK code continually by 10 times.
- E. New: User can press new icon to add name and phone number after fill in related info. Support 7 characters by Chinese or 14 characters by English in name entries. Phone number can support up to 20 digital or special characters.
- F. Delete: User can delete selected phonebook entries in editing area on left hand side by Delete icon.
- G. Close: Close and exit “USimEditor” window.

- H. Phone Book Status: Showing phone book storage information in GSM/CDMA memory as Total number/ Used number/ Unused number. The total number for GSM is 150 and 80 for CDMA.
- I. SMS Book Status: Showing Short Message Service storage information in GSM/CDMA memory as Total number/ Used number/ Unused number. The total number for GSM is 25 and 15 for CDMA.
- J. Select Language: Select one from 10 supporting language.
- K. Import or export data: Transfer phone book and SMS data between different SIM card by TXT or CSV format.
- L. SIM Card Information: **Display** phone Book and SMS book information.

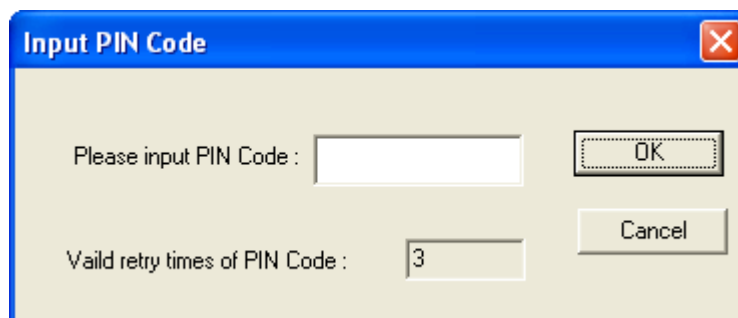
3.2 SMS Operation Manual:



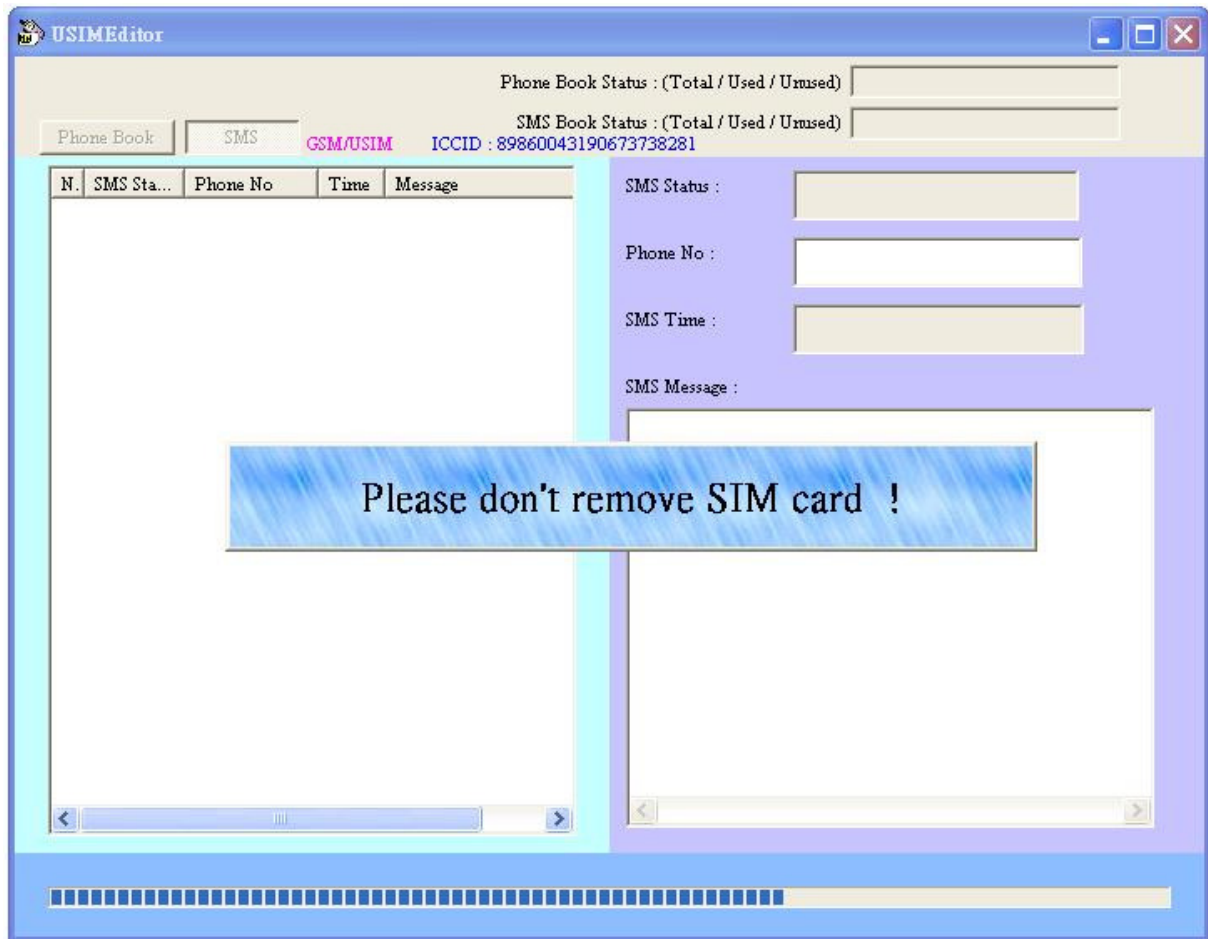
- Execute "USimEditor" by pressing SIM Editor



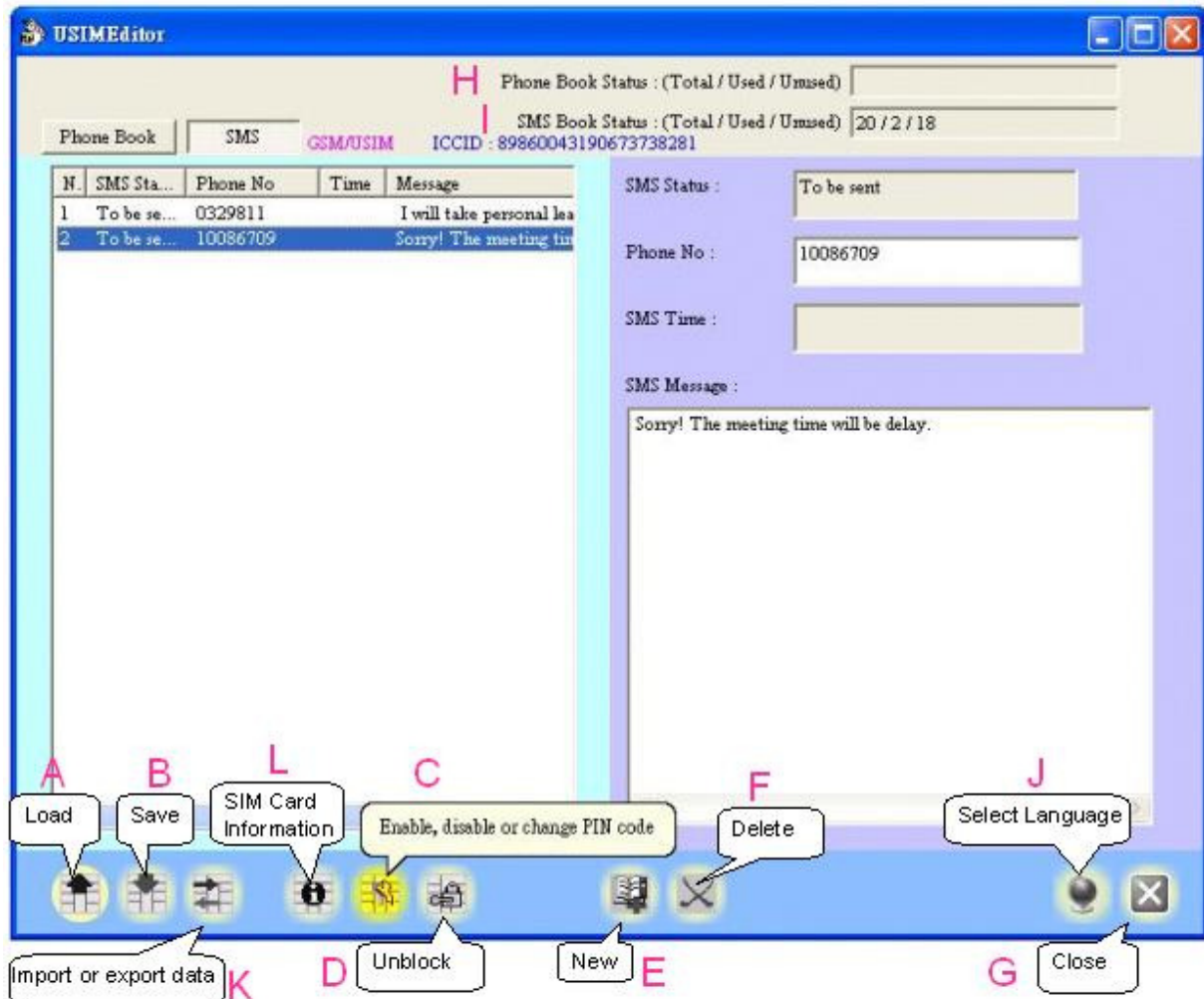
- "USimEditor" showing. Select Phone Book folder and then press Load icon



- User can read/ write message in SIM card after entering correct PIN code.



- Please DO NOT remove SIM card when data backup



- A. Load: Backup message data from SIM card to PC
- B. Save: After editing message entries by “USimEditor”, click save to save edited message entries back to SIM card
- C. Enable, Disable or Change PIN code: User can start using, unlock or change PIN code by this icon
- D. Unblock : SIM card will be locked to avoid misappropriation if user enters wrong PIN code by three times. Please enter PUK code to unlock. Attention! SIM card will lose efficacy forever if user enters PUK code continually by 10 times.
- E. New: User can press new icon to add phone number and message content after typing. Support 20 numbers and particular symbols in phone no line. Support 70 characters by Chinese or 140 characters by English in SMS Message box.

- F. Delete: User can delete selected message entries in editing area on left hand side by Delete icon.
- G. Close: Close and exit “USimEditor” window.
- H. Phone Book Status: Showing phone book storage information in GSM/CDMA memory as Total number/ Used number/ Unused number. The total number for GSM is 150 and 80 for CDMA.
- I. SMS Book Status: Showing Short Message Service storage information in GSM/CDMA memory as Total number/ Used number/ Unused number. The total number for GSM is 25 and 15 for CDMA.
- J. Select Language: Select one from 10 supporting language.
- K. Import or export data: Transfer phone book and SMS data between different SIM card by TXT or CSV format.
- L. SIM Card Information: **Display** phone Book and SMS book information.

4. Copyright Notice

Copyright 2012 by ITE Tech. Inc. All Rights Reserved.

This manual is copyrighted by ITE Tech. Inc. You may not reproduce, transmit, transcribe, store in a retrieval system, or translate into any language, in any form or by any means, electronic, mechanical, magnetic, optical, chemical, manual, or otherwise, any part of this publication without the expressly written permission from ITE Tech. Inc.

Trademarks

All brand or product names mentioned are trademarks or registered trademarks of their respective holders.

Disclaimer

ITE Tech. Inc. makes no representations or warranties regarding the Contents of this manual. We reserve the right to revise the manual or make changes in the specifications of the product described within it at any time without notice and without obligation to notify any person of such revision or change. The information contained in this manual is provided for the general use by our customers. Our customers should be aware that the personal computer and its peripheral field is the subject of many patents. Our customers should ensure that they take appropriate action so that their use of our products does not infringe upon any patents. It is the policy of ITE Tech. Inc. to respect the valid patent rights of third parties and not to infringe upon or assist others to infringe upon such rights.